



General Safety

PLEASE KEEP THESE INSTRUCTIONS FOR FUTURE REFERENCE.

1. Unplug floor lamp before adapting it to SmartFit Planter®.
2. Do not drill drain holes or use cracked or punctured SmartFit Planter® with an electrical device, such as a floor lamp.
3. Do not pinch wiring. Thread floor lamp wiring through the Cord Tunnel in the Reservoir and Rear Panel.
4. Do not pinch lamp or umbrella base. Rest SmartFit Planter® on a flat and stable surface.
5. Use all-weather electrical appliance when using SmartFit Planter® outdoors.
6. Prune or stake plants away from light bulb.
7. Team-lift SmartFit Planter® when filled with soil and or fully assembled.
8. Avoid pouring water or soil through Pole Cavity by always attaching Pole Boot to Pole Cavity.

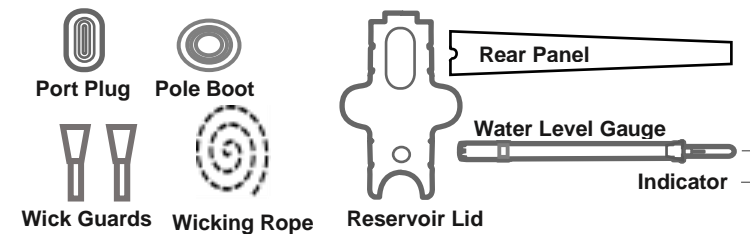
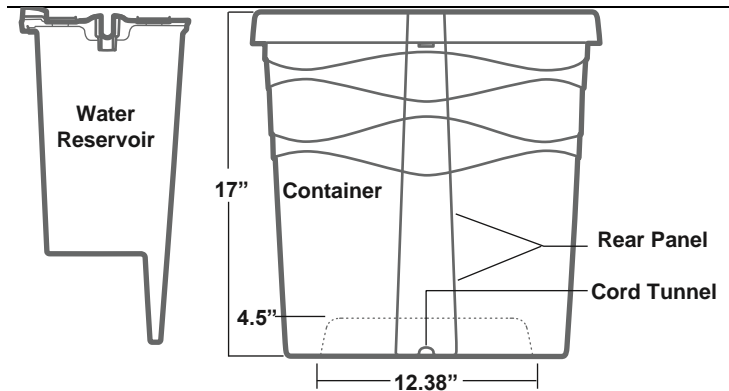
Congratulations on purchasing your SmartFit Planter®!

The following illustrations and instructions will guide you through the steps of assembling your SmartFit Planter®. With its new design element, SmartFit Planter® can be used with or without a floor lamp or patio umbrella.

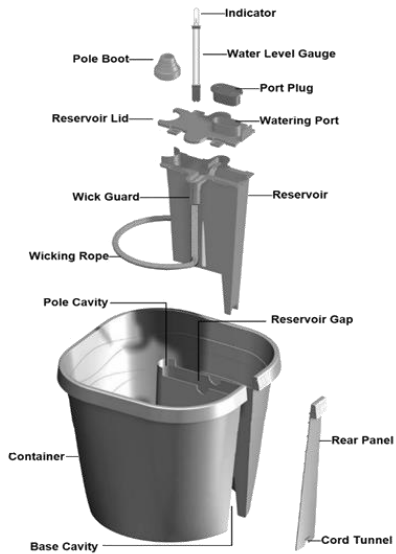
Can Fit Floor Lamp or Patio Umbrella with Dimensions Up to:

Base Diameter:	12" (30.5 cm)
Base Height:	4" (10.2 cm)
Pole Diameter:	2" (5 cm)
Soil Capacity:	1.34 cubic feet (38 Liters)
Reservoir Capacity:	1.5 Liters
When fully assembled with moderately wet soil, planter weighs: ~65 lbs.	

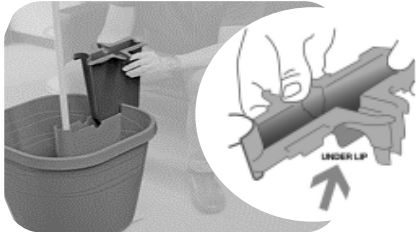
Parts List (not to scale)



Assembly Chart and Instructions

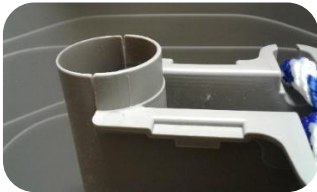


1 Secure Wicking Rope to Reservoir



▶ Insert floor lamp into Container.

▶ Insert Reservoir into Container, ensuring the Reservoir under-lip secures tightly to Container and completes the Pole Void circle as show below ▼.



▶ Thread Wicking Rope through the two Wick Guards, so that the larger diameter ends of the Wick Guards are facing the ends of the Rope. ▶ Insert the Rope ends to the bottom of the Reservoir (not the soil Container).

▶ Slip Wick Guards over Reservoir Rope Channels to secure the Wicking Rope to the Reservoir, as shown ▼.



2 Secure Rear Panel to Reservoir



▶ Hook Rear Panel tab to the bottom of the Reservoir.

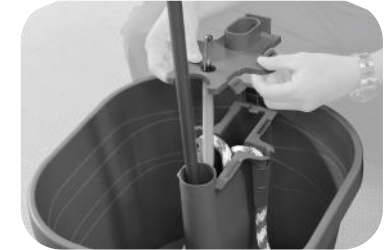


▶ Latch Rear Panel tab to the top of the Reservoir.

3 Fit Water Gauge to Reservoir Lid

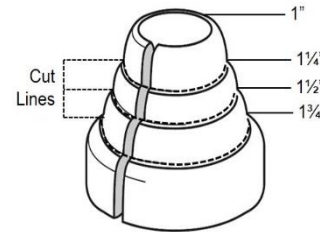


▶ Carefully, twist off Indicator section of Water Level Gauge. ▶ Twist and push Gauge through the smallest hole in the Reservoir Lid.



▶ Re-attach Indicator to Water Level Gauge through Reservoir Lid. ▶ Secure Reservoir Lid to Reservoir.

4 Fit Boot to Pole Cavity



▶ Using scissors, carefully trim Pole Boot along the Cut-Line that fits your lamp or umbrella pole diameter.



▶ Snug-fit Pole Boot around lamp pole and Pole Cavity.

5 Fill planter with soil and plants – Enjoy!

Please visit our site to view an assembly video for more details.

